

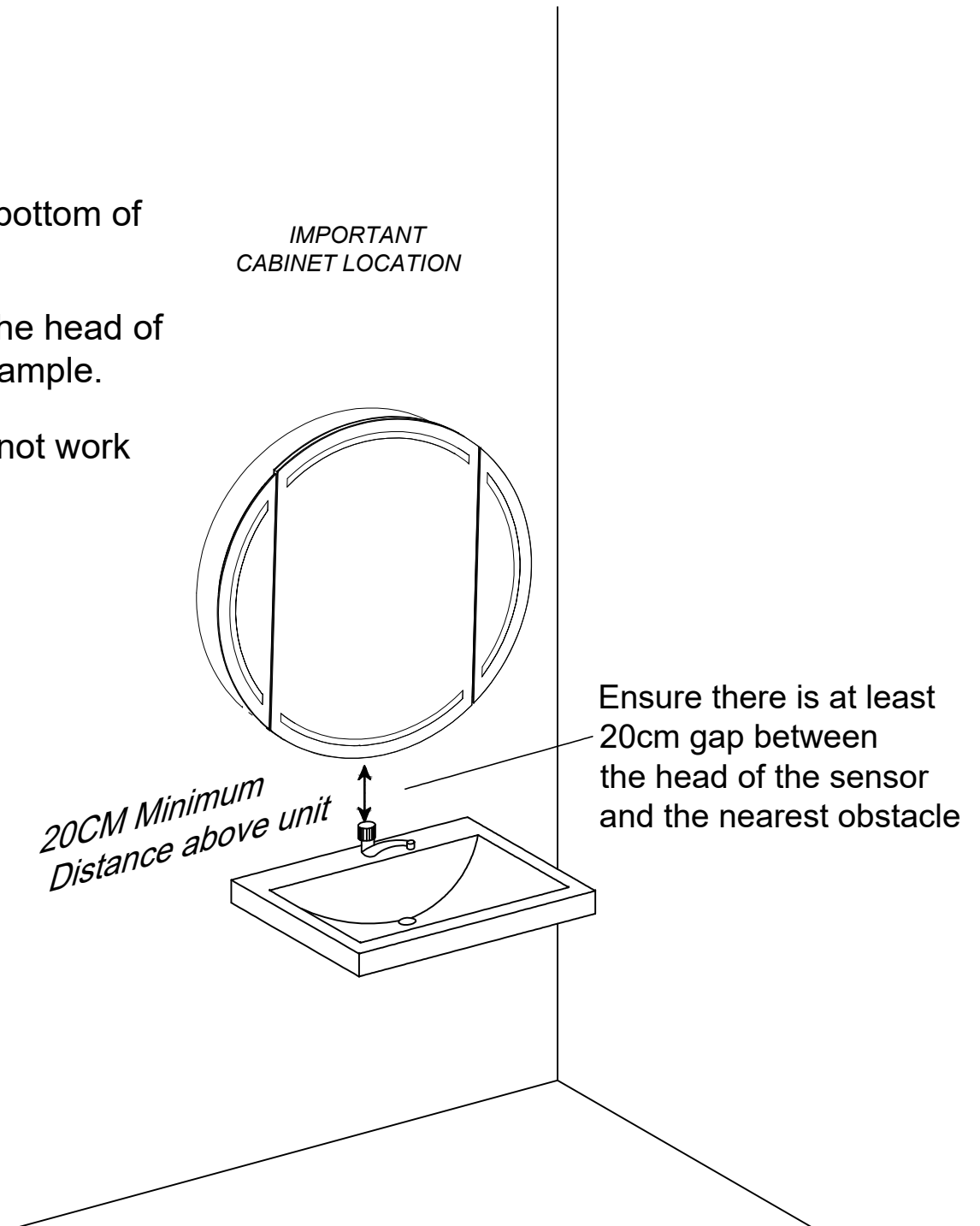
Dear Customer

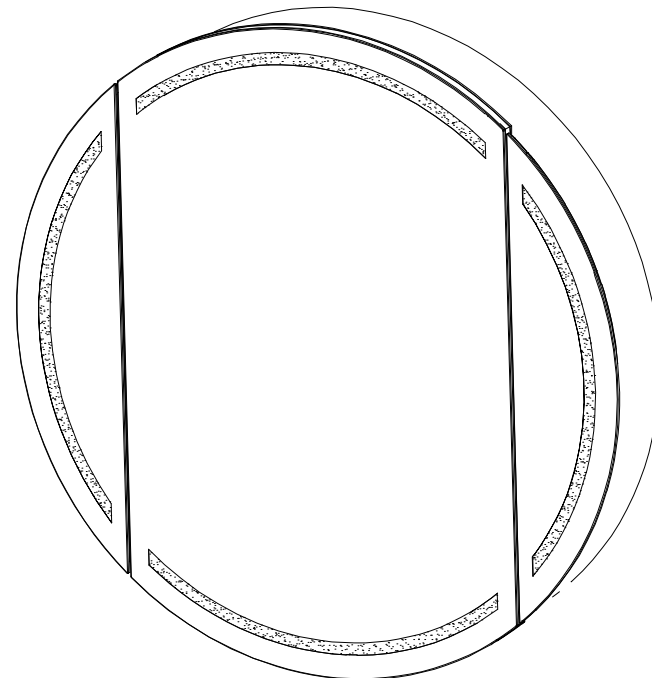
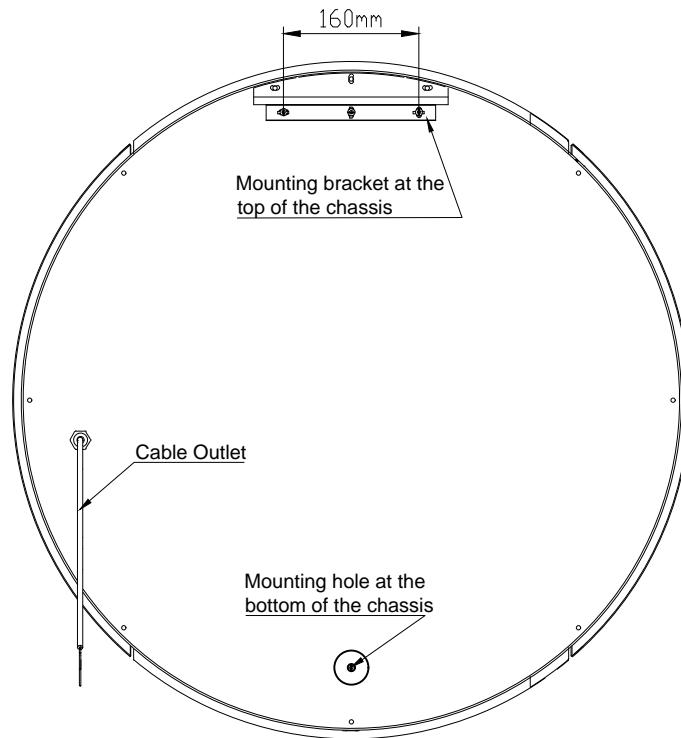
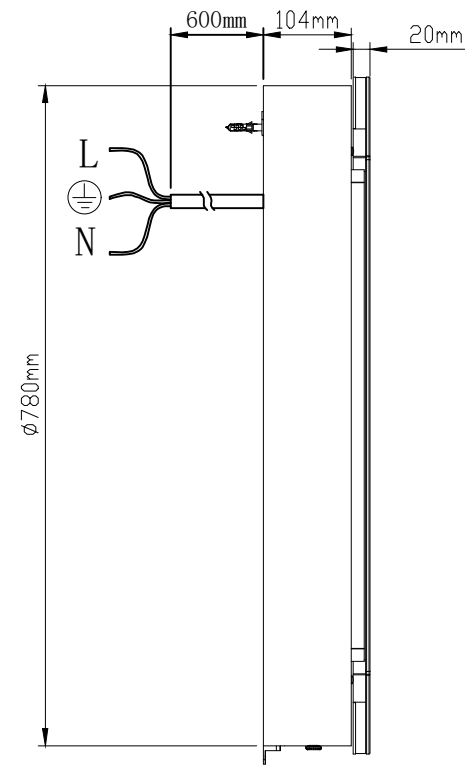
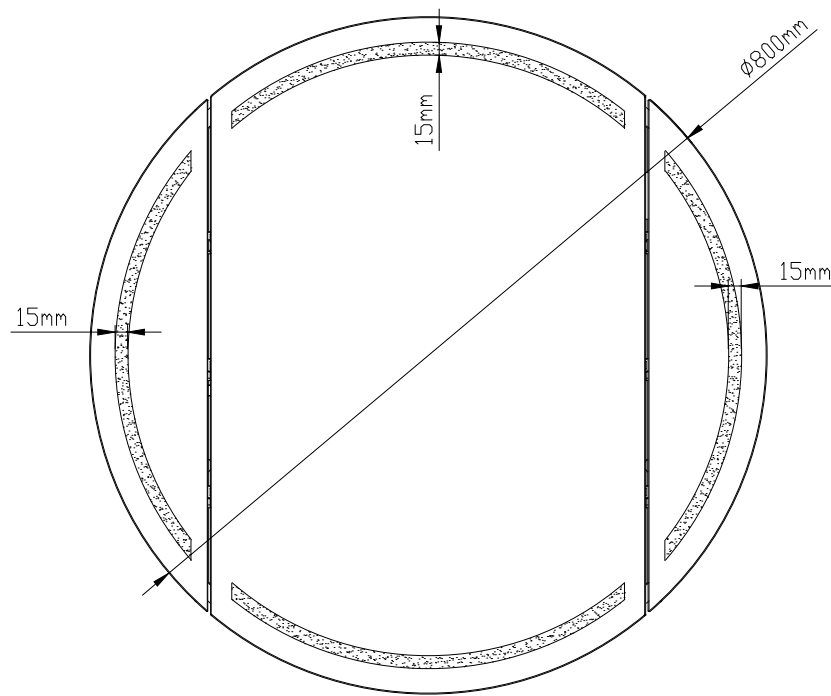
Very important Please Note:

Your new cabinet has an Infra-red sensor on the bottom of the rear carcass.

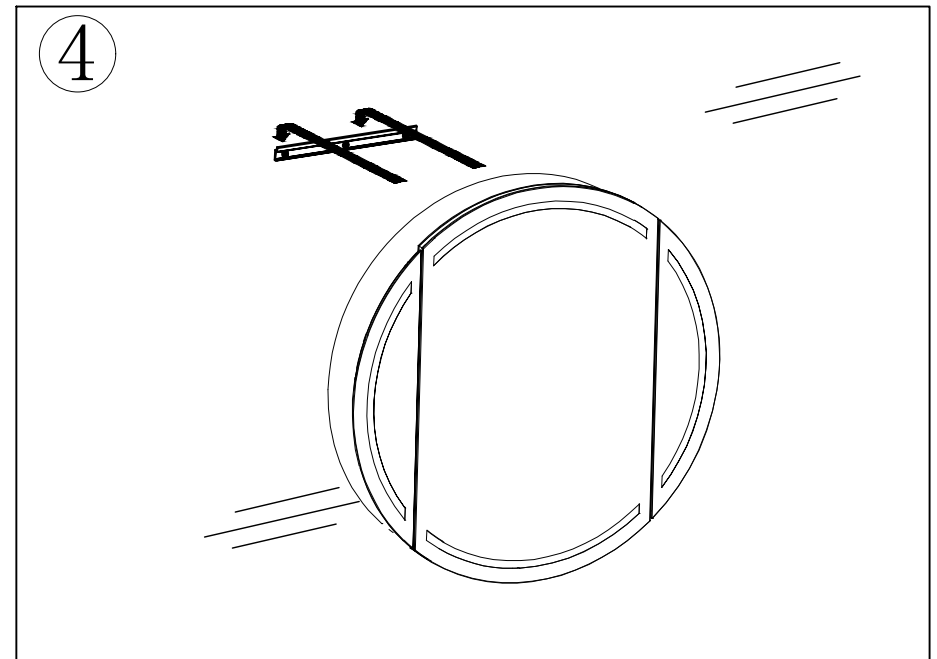
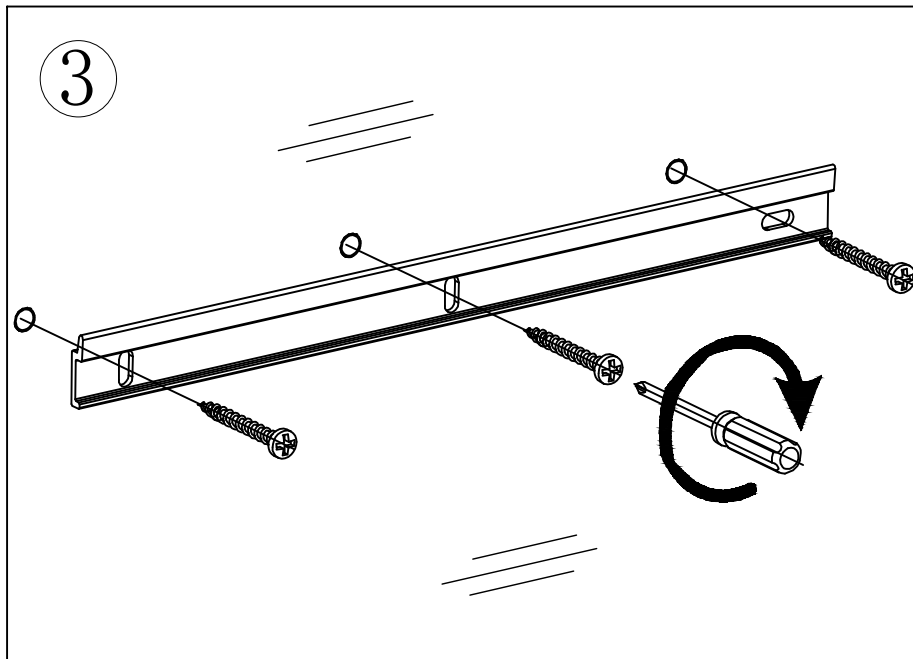
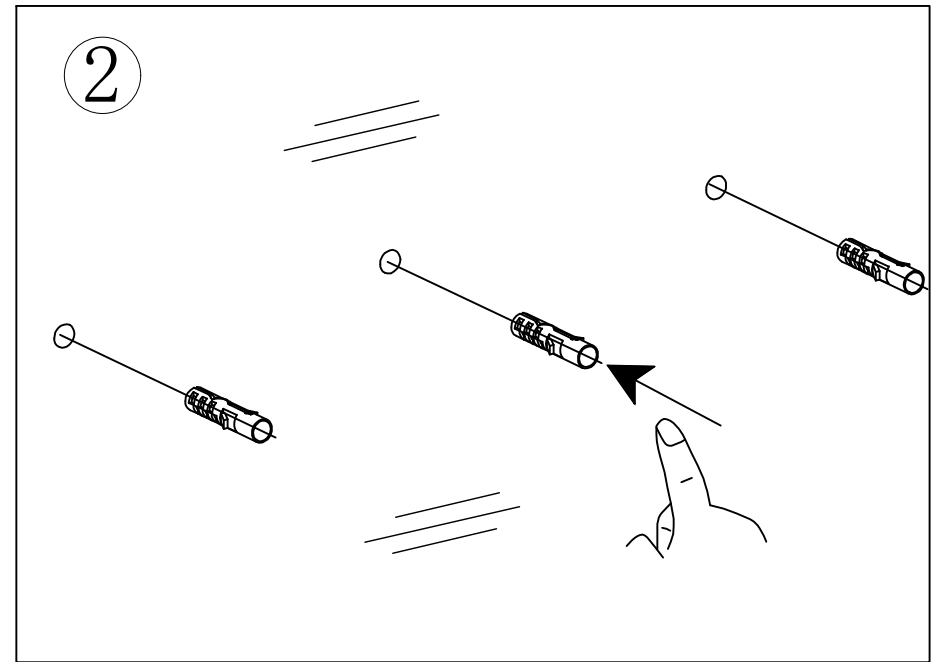
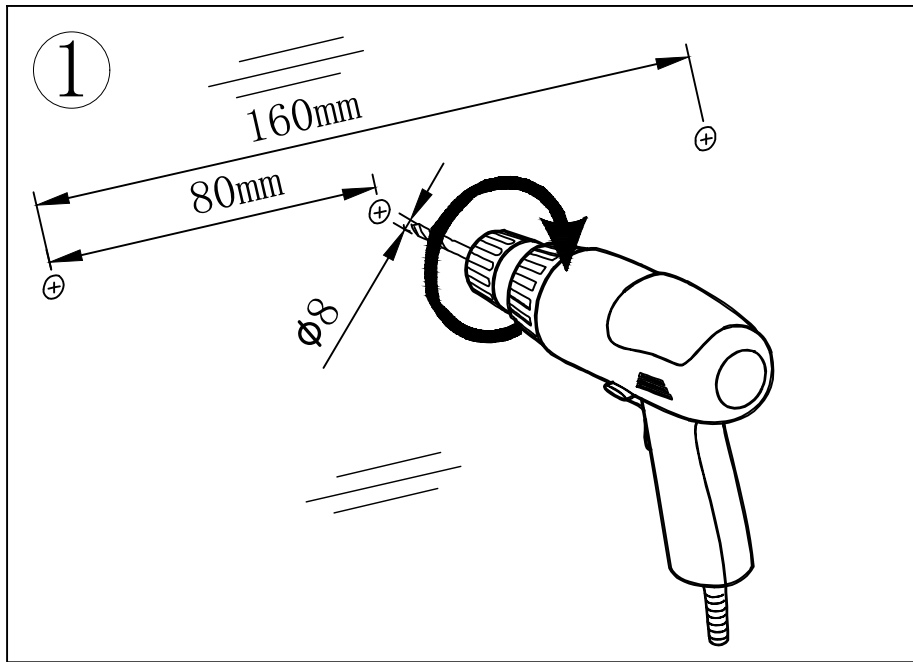
There needs to be at least a 20cm gap between the head of the sensor and the nearest obstacle, a wall for example.

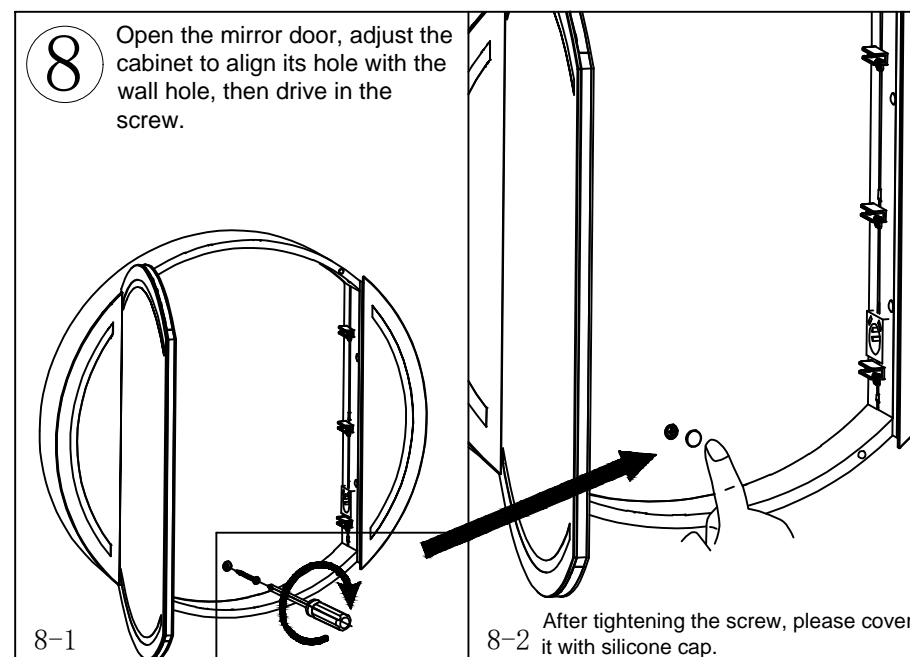
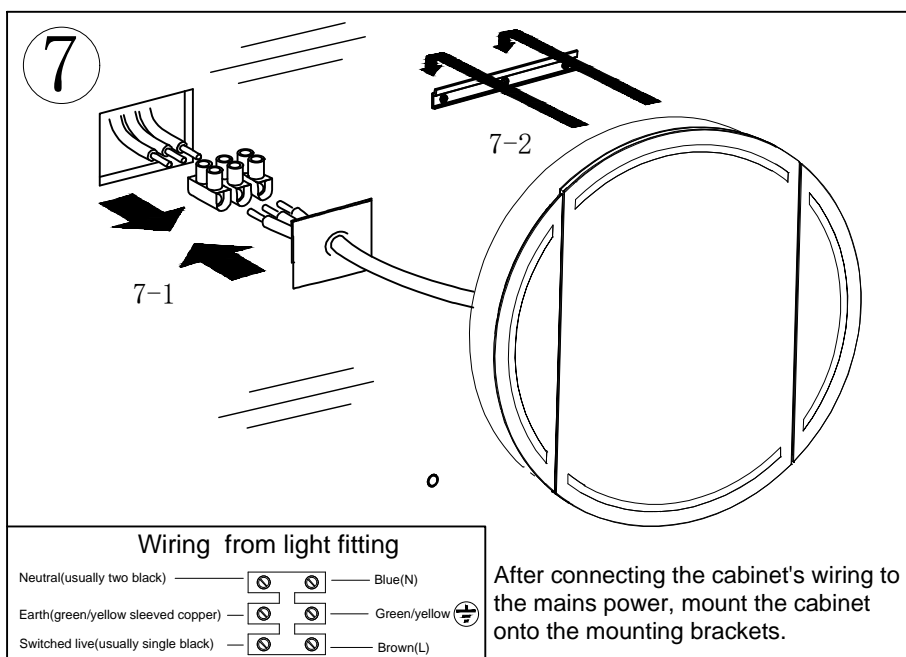
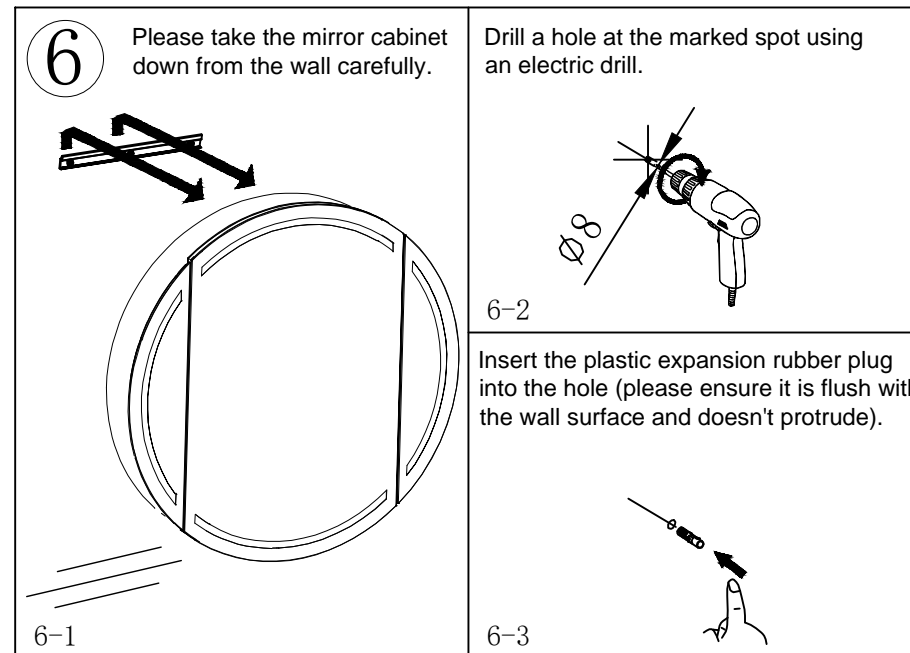
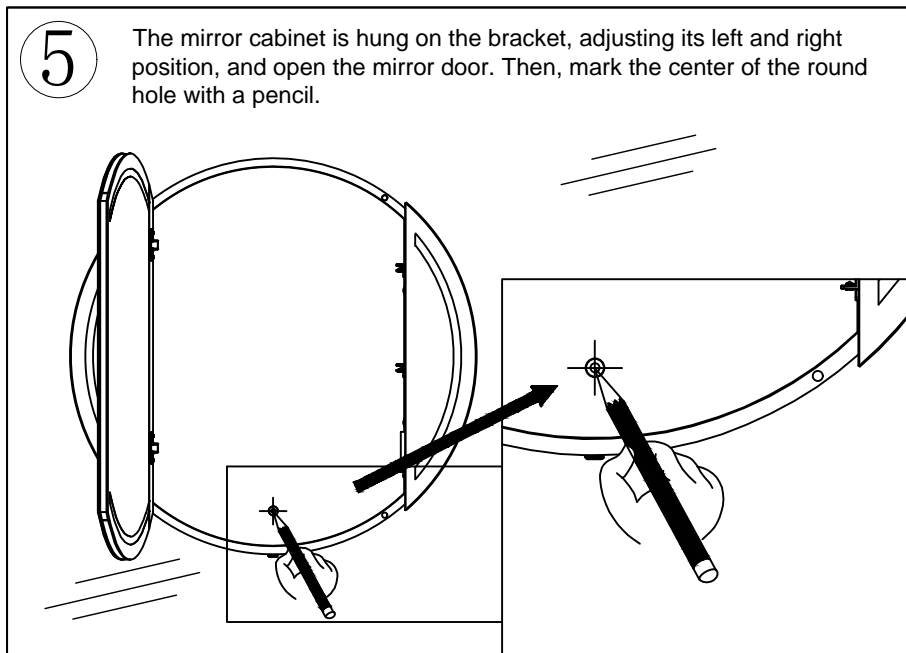
If the gap is less than 20cm then your sensor will not work properly!



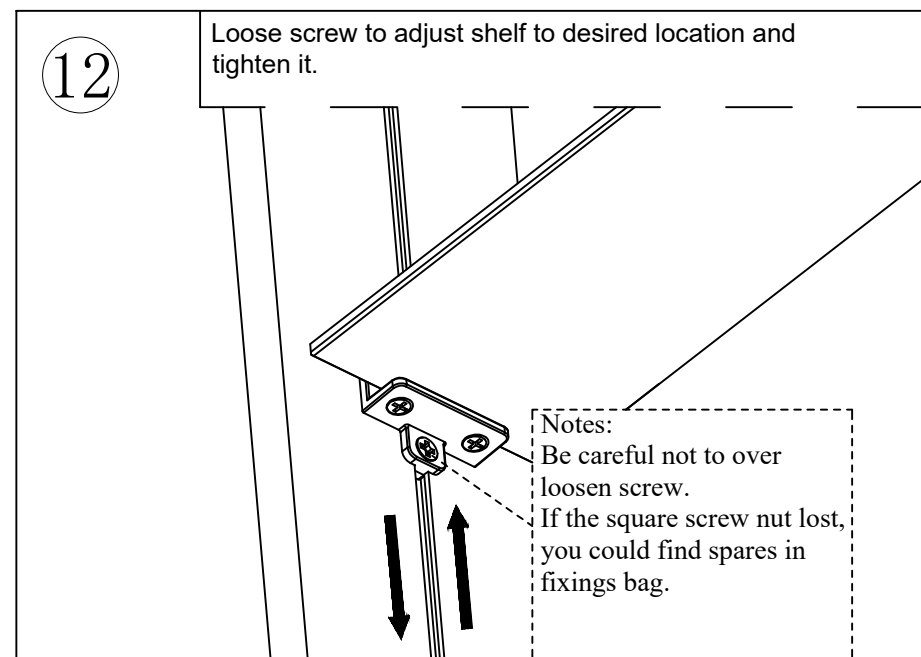
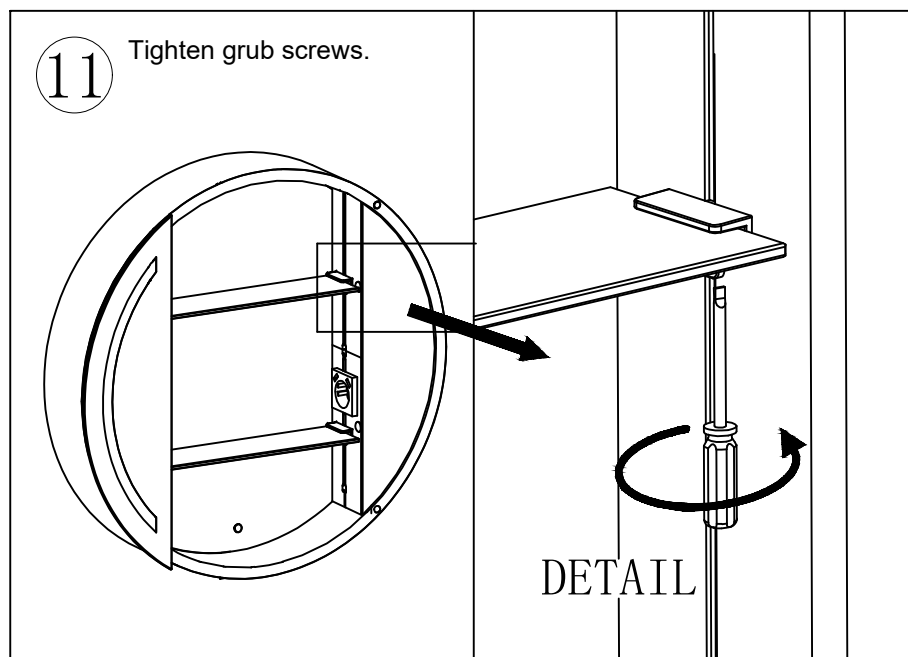
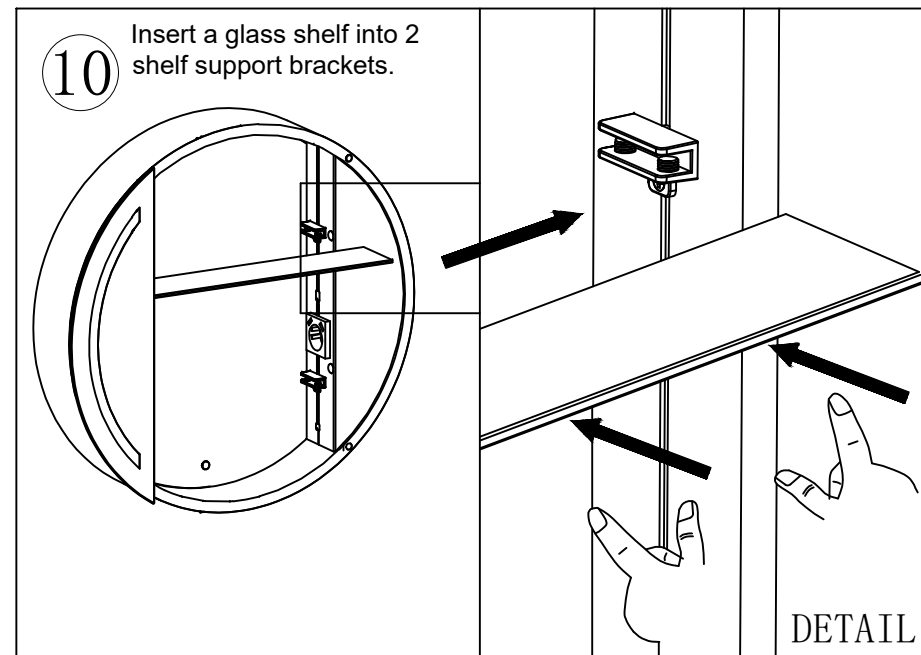
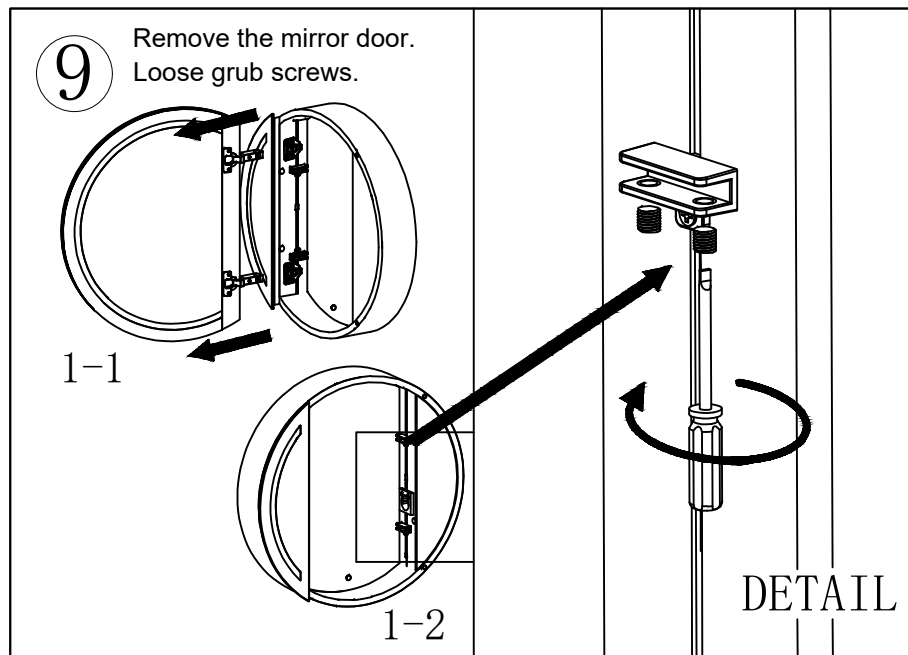


INSTALLATION INSTRUCTIONS



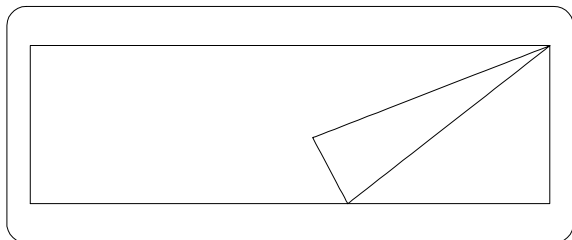


FIXING INSTRUCTIONS FOR THE ADJUSTABLE GLASS SHELVES

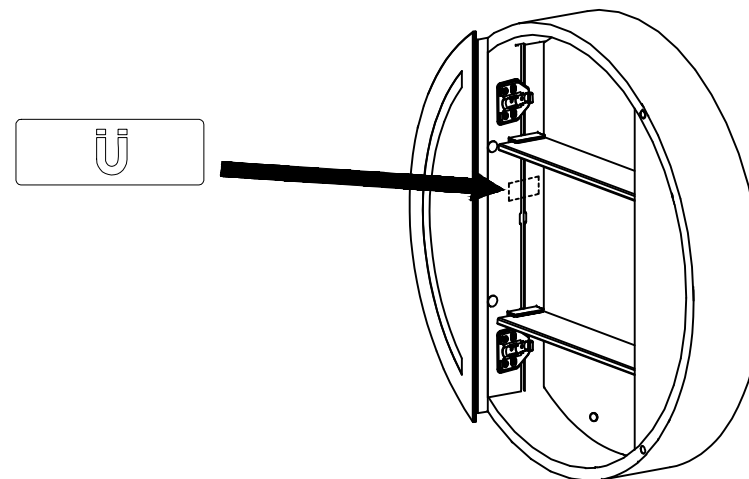


MAGNETIC STRIP INSTALLATION INSTRUCTION

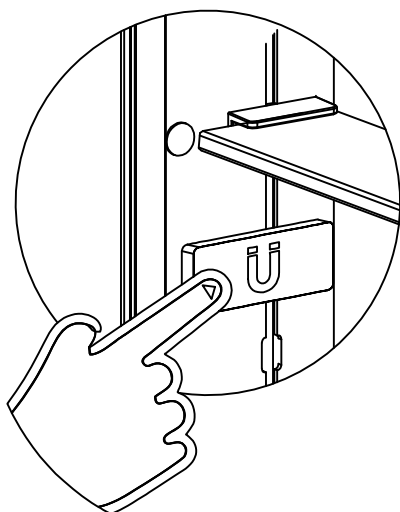
- 1 Tear the back adhesive film



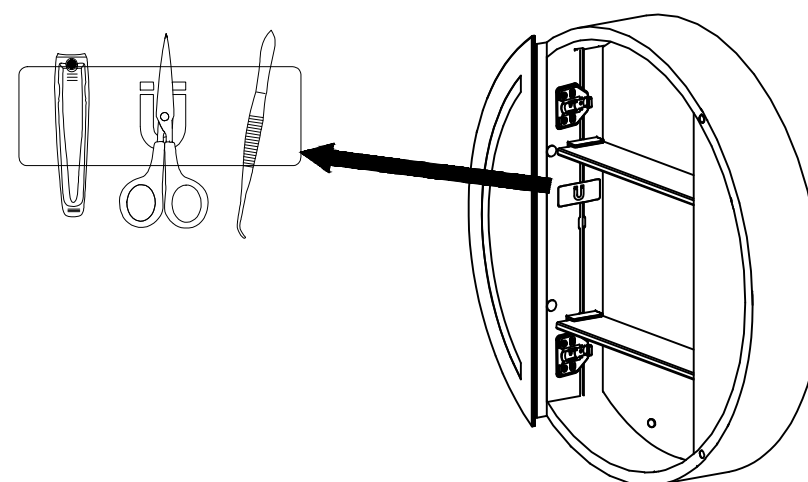
- 2 Stick it on a suitable position



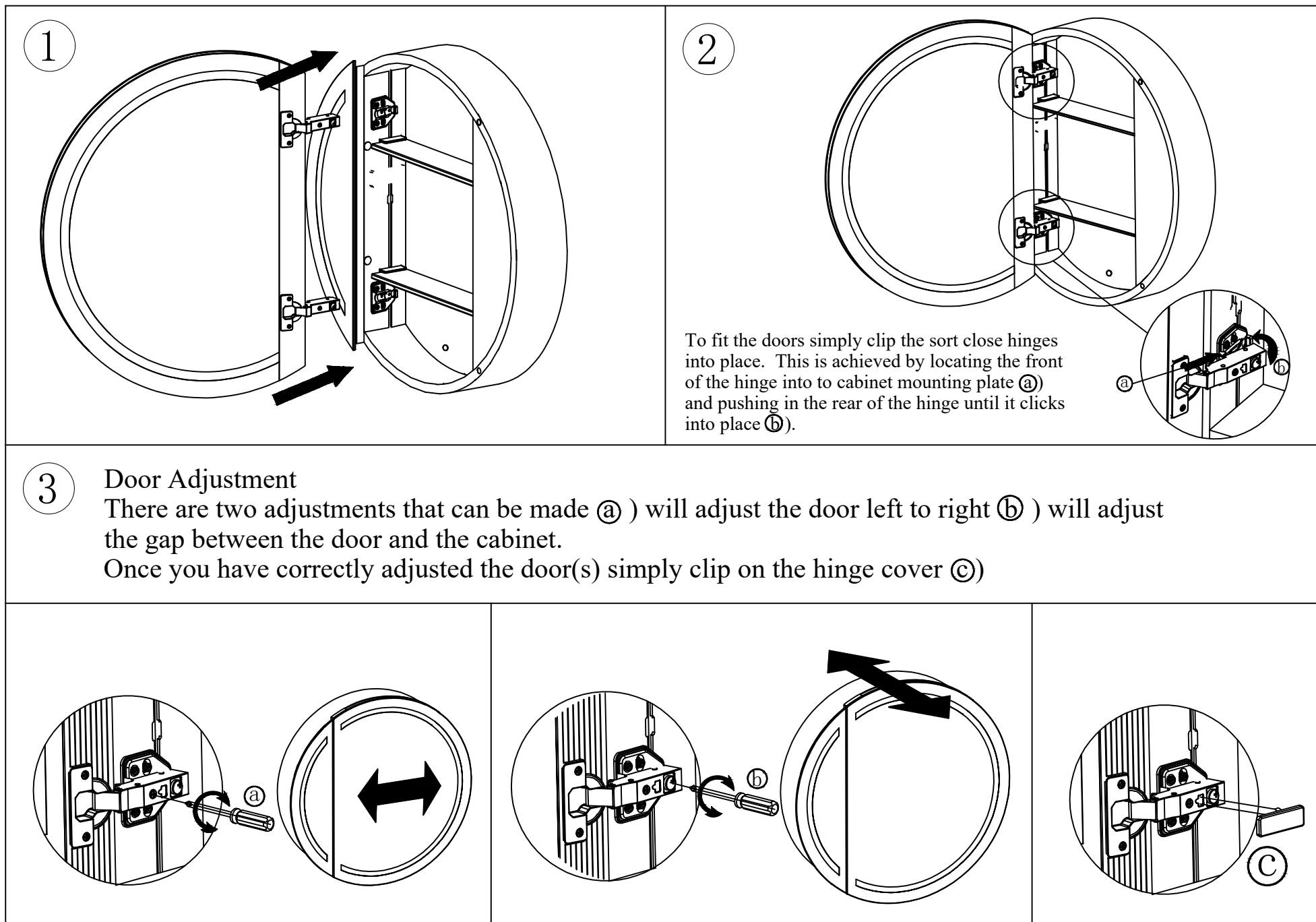
- 3 Press and hold after pasting



- 4 Put your accessories on the magnet



FIXING INSTRUCTIONS FOR THE MIRROR DOOR (STRONGLY ADVICE TO INSTALL EACH DOOR WITH 2 PERSONS)



CAUTION: We recommend that you make sure the rear cable is not kinked or overlapped after installation to avoid potentially cracking the internal mirror.

